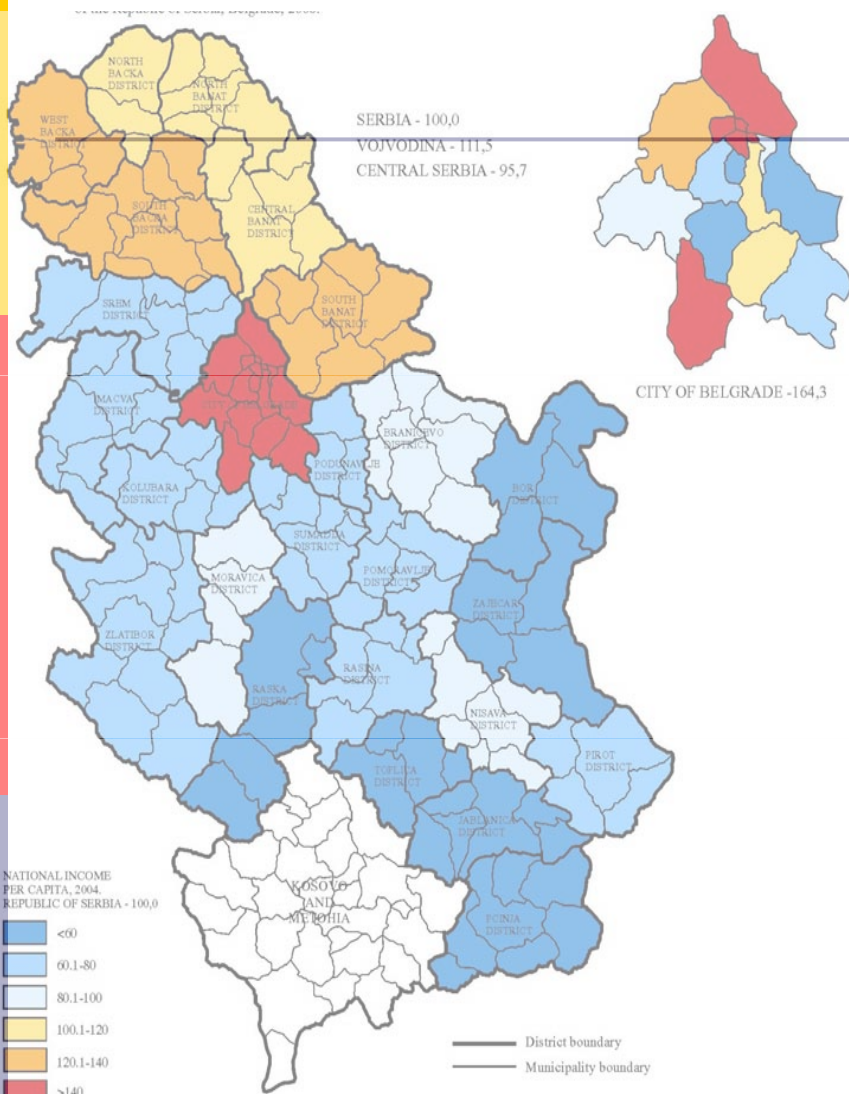


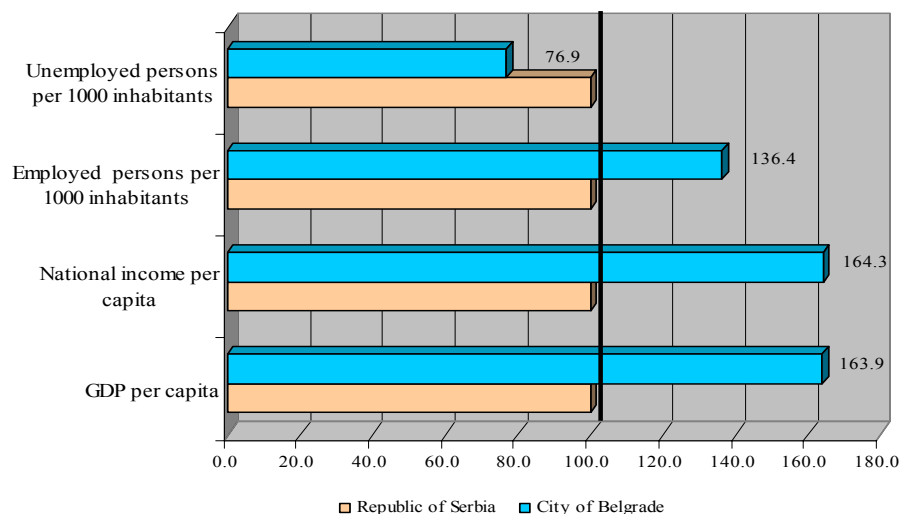
City of Belgrade – significance in Republic of Serbia

socio-economic structure



- **21,0%** total population
- **39,7%** population with higher and university education
- **29,0%** total employees
- **36,5%** employees in service activities
- **34,9%** gross domestic product
- **45,1%** realized investment

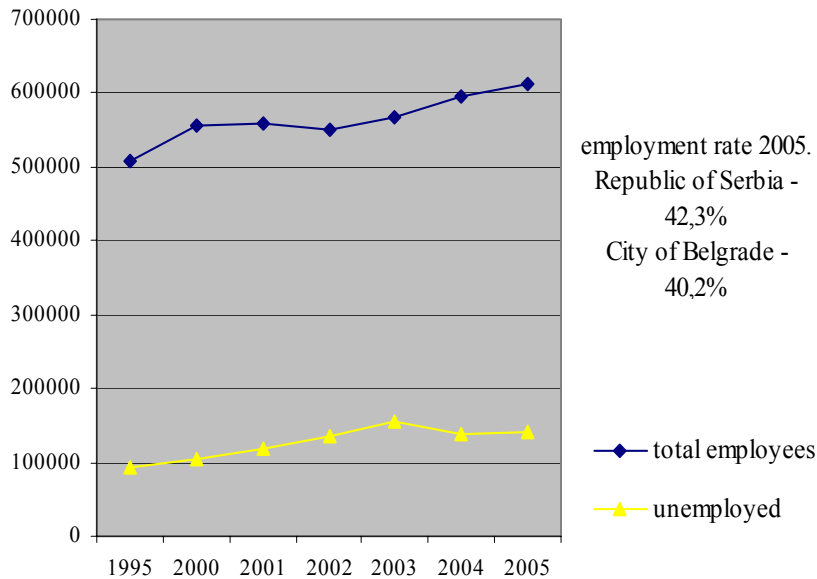
ECONOMIC DEVELOPMENT, 2004. Republic of Serbia - 100



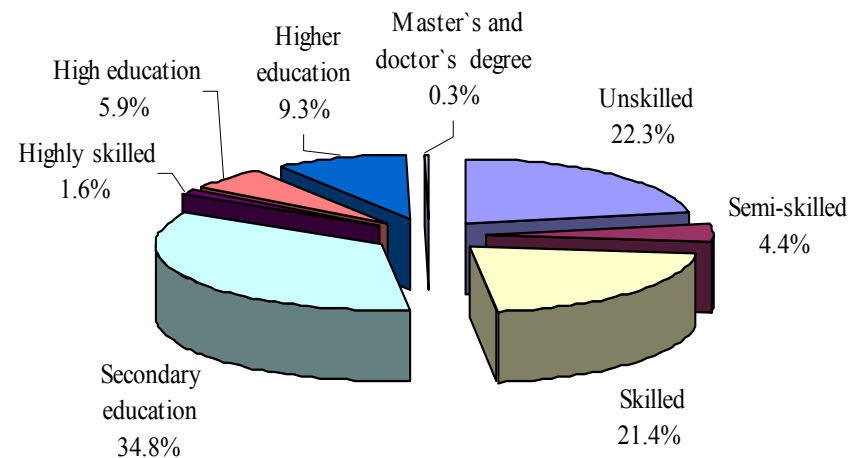
NATIONAL INCOME PER CAPITA, 2004, REPUBLIC OF SERBIA – 100

City of Belgrade - characteristics of labour market

EMPLOYMENT AND UNEMPLOYMENT, 1995-2005.

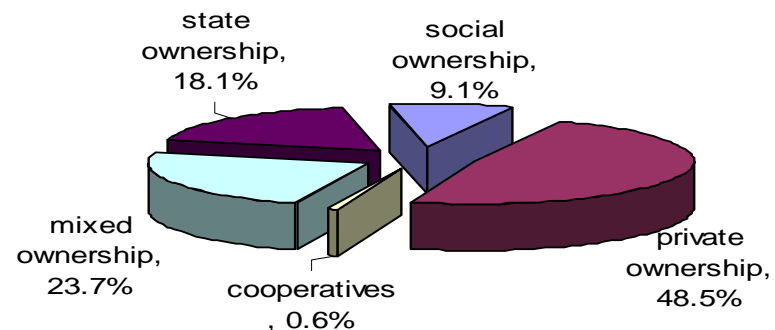


UNEMPLOYMENT BY EDUCATION ATTAINMENT, 2005



City of Belgrade - GDP characteristics

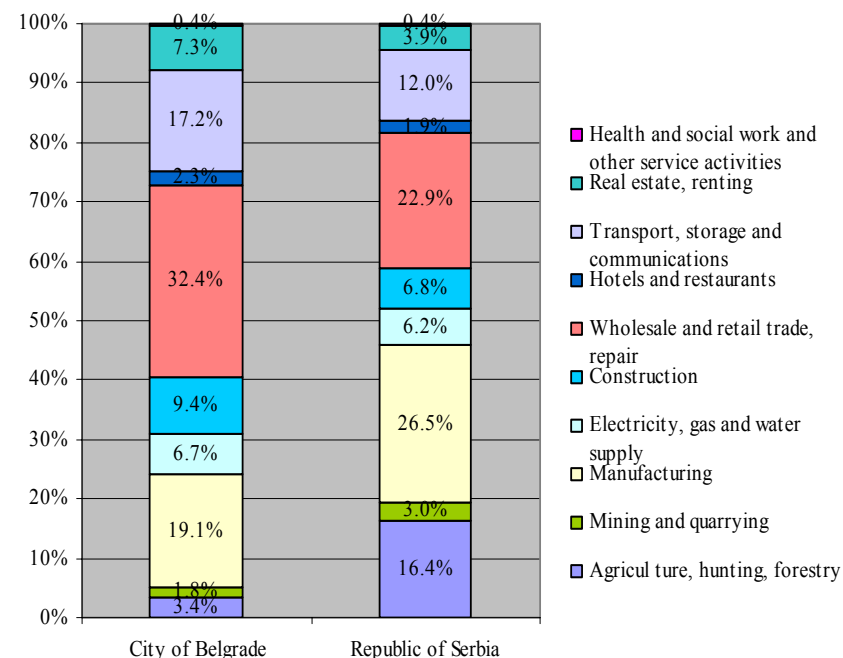
| Municipalities | GDP EUR, 2004. | structure |
|-------------------|-------------------|---------------|
| Vozdovac | 299639905 | 6.2% |
| Vracar | 361267581 | 7.4% |
| Zvezdara | 220001986 | 4.5% |
| Zemun | 459001784 | 9.5% |
| Novi Beograd | 1092409338 | 22.5% |
| Palilula | 450739446 | 9.3% |
| Rakovica | 81484797 | 1.7% |
| Savski venac | 507769811 | 10.5% |
| Stari Grad | 566210811 | 11.7% |
| Cukarica | 229051392 | 4.7% |
| Barajevo | 13884405 | 0.3% |
| Grocka | 72430081 | 1.5% |
| Lazarevac | 224464243 | 4.6% |
| Mladenovac | 71175311 | 1.5% |
| Obrenovac | 163344716 | 3.4% |
| Sopot | 41709216 | 0.9% |
| Total | 485458824 | 100.0% |
| Per capita | 2917 | |



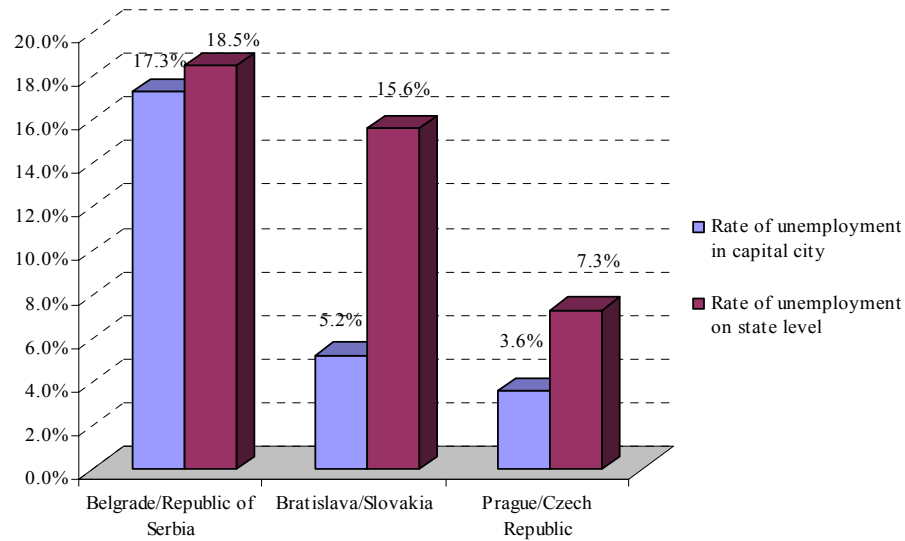
a) by type of ownership

STRUCTURE OF GDP

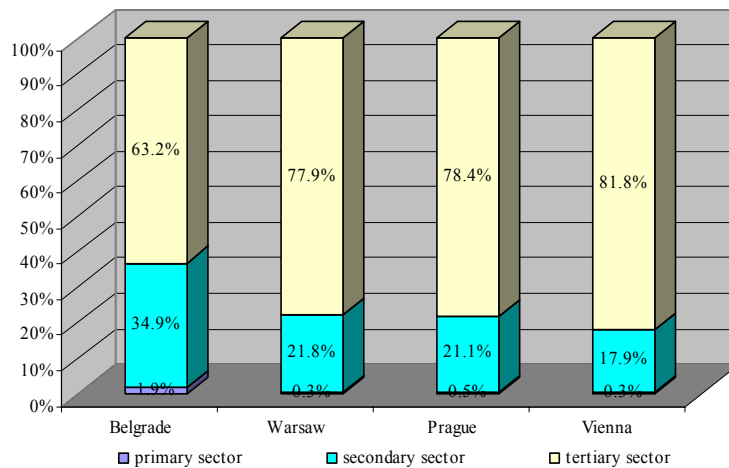
b) by sectors of activities



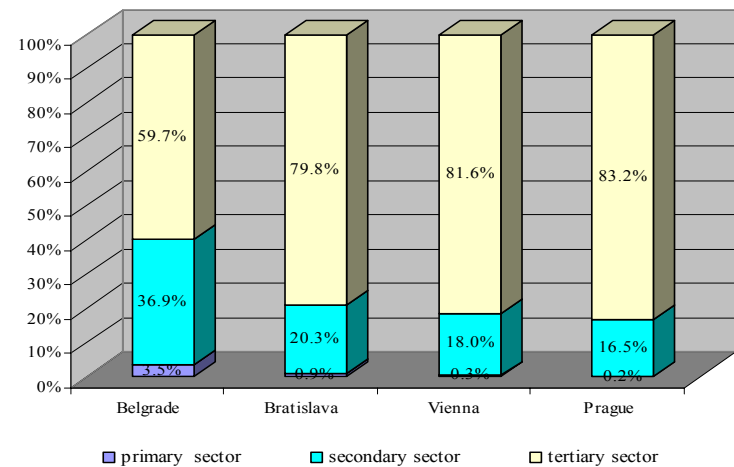
RATE OF UNEMPLOYMENT, 2004



STRUCTURE OF GDP BY SECTORS OF ACTIVITIES, 2004

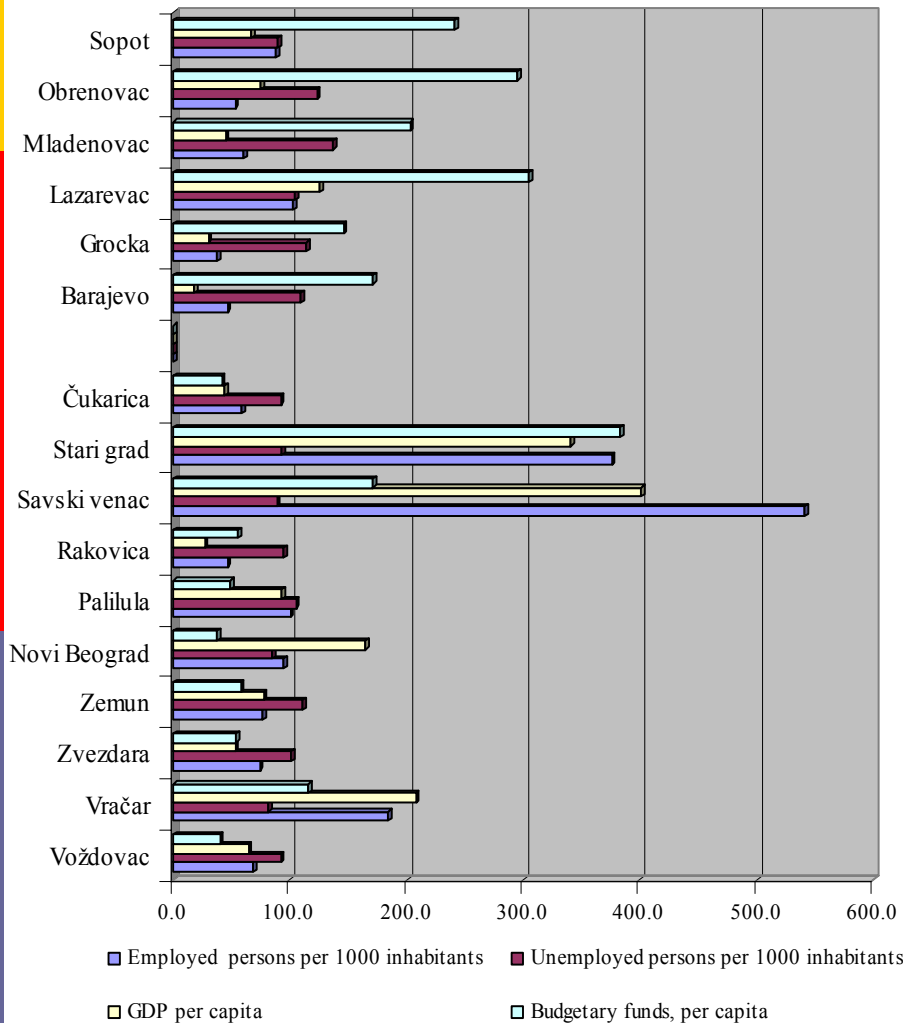


STRUCTURE OF EMPLOYEES BY SECTORS OF ACTIVITIES, 2002



Municipalities of City of Belgrade – selected indicators of socio-economic development

Level 2004, City of Belgrade = 100



After 2000. a visible gradual recovery of the city economy has taken place characterized by:

- improved level of employment – from approx. 430,000 to approx. 650,000;
- considerably higher salaries – from approx. 40 Euro to approx. 320 Euro;
- increase of the city budget from approx. 60 million Euro to approx. 500 million Euro; and
- more dynamic investment activity (uneven territorial distribution).

Serious economic problem is insufficient cohesion and unbalanced development inside city territory, demonstrated by:

- Significant differences of per capita GDP between municipalities, especially between inner city and outer city municipalities (ratio 16:1);
- Long term present profound disproportions of per capita budget funds between inner city and outer city municipalities (of over 10 times);
- Level of employment inside municipalities, etc.